

# ezPATCH™ | Connectorized Cable (Cords)

## Optical Fiber Jumpers & Pigtails



### Product Snapshot

|                        |  |
|------------------------|--|
| <b>Applications</b>    | Interconnect & Cross-Connect Patch, Splice Central Office, Headend, LAN, Data Center                 |
| <b>Configurations</b>  | Jumpers (2 ends) - Patchcords<br>Pigtails (1 end) - Splicing Terminated Fibers                       |
| <b>Connector Types</b> | Styles: SC, LC, FC, ST, Ruggedized Connector<br>Polishes: UPC (Ultra PC), APC (Angled PC)            |
| <b>Fiber Types</b>     | Singlemode: (BendBright-XS®, BendBright)<br>Multimode: (MaxCap® 10 GbE, HiCap 1 GbE, 50um or 62.5um) |
| <b>Cable Types</b>     | Riser (OFNR), Plenum (OFNP)  |
| <b>Cable Diameters</b> | Simplex: 3 mm, 2 mm, 1.6 mm, 900 um<br>Duplex: 3 mm Zipcord, 2 mm Zipcord                            |



SC-UPC



FC-APC

### Reliable patch cords & pigtails for everywhere you need to connectorize fibers.

Draka ezPATCH Cords are compatible with all industry applications and fully compliant to industry standards including Telcordia GR-326. Patchcords are manufactured to rigorous quality standards to assure a high degree of precision. A fully automated polishing process ensures optimum geometries for radius of curvature, apex offset, and fiber undercut tolerances. Precise tolerance control results in reliable low-loss connections and rematings over the long term and under a wide range of operating conditions. All Draka patchcords with singlemode or multimode fibers are available in various cable diameters and Hybrid assemblies are also available.

### Features & Benefits

- [+] High-quality automated polishing process gives optimal geometries for better connection and reconnection performance
- [+] Tight tolerance control for reliable, low-loss connections and reconnections
- [+] Wide range of connectors that support multiple applications.

#### SC-UPC

- [+] Stable, pull-proof
- [+] Push-pull mounting
- [+] 2.5 mm zirconia ceramic ferrule
- [+] Keyed for repeatable connections
- [+] Widely used for telecommunications

### Features & Benefits

#### SC-APC

- [+] Same mechanical design as SC-UPC
- [+] Low return loss needed for CATV applications
- [+] Physical contact polish at 8 degrees

#### LC-UPC/APC

- [+] LAN and high-density applications
- [+] 1.25 mm zirconia ceramic ferrule
- [+] RJ-45 latching style
- [+] Duplex patchcords meeting simplex version specifications
- [+] APC - physical contact polish at 8 degrees

#### FC-UPC/APC

- [+] Compatible with JIS specification
- [+] Stable, pull-proof
- [+] 2.5 mm zirconia ceramic ferrule
- [+] Keyed for repeatable connections
- [+] APC - physical contact polish at 8 degrees

#### ST-UPC

- [+] LAN, premise and telecom applications
- [+] Fully compatible with all ST connector products
- [+] Bayonet style twist coupling
- [+] 2.5 mm zirconia ceramic ferrule
- [+] Keyed for repeatable connections

# ezPATCH™ | Connectorized Cable (Cords)

## Optical Fiber Jumpers & Pigtails



### Ordering Guide

For More Information Contact Us at [sales@drakaamericas.com](mailto:sales@drakaamericas.com) or 800.879.9862.

#### Patchcord and OSP 1F Drop Cables

| 1<br>Family           | 2<br>Fiber Type  | 3<br>Cable  | 4<br>Flame Rating  | 5<br>Cable Diameter                             | 6<br>Fiber Count | 7<br>First Connector  | 8<br>Second Connector   | 9<br>Length             | 10<br>Length Units |
|-----------------------|--|---|--|---|------------------|---|---|-------------------------|--------------------|
| P=Pigtail<br>J=Jumper | B=ESMBB<br>C=62.5 STD<br>D=50 STD<br>E=50 10GBE<br>F=BBXS Blue Jkt<br>G=BBXS Yellow Jkt<br>H=62.5 HC | A=Simplex<br>B=Duplex Zip<br>C=3mm Duplex Round<br>I=1F Dielectric Drop<br>J=1F Toneable Drop | I=Indoor/Outdoor<br>O=Outdoor<br>P=Plenum<br>R=Riser<br>Z=LSZH | A=.9mm<br>B=1.6mm<br>C=2.0mm<br>E=2.9mm<br>F=NA | 01,02            | A=SCU<br>B=SCA<br>C=FCU<br>D=FCA<br>E=LCU<br>F=STU<br>G=OSP SCA<br>H=OSP SCU<br>I=LCA<br>J=MU<br>K=MTRJ | A=SCU<br>B=SCA<br>C=FCU<br>D=FCA<br>E=LCU<br>F=STU<br>G=OSP SCA<br>H=OSP SCU<br>I=LCA<br>J=MU<br>K=MTRJ | Length<br>0000-<br>9999 | F=Feet<br>M=Meters |
| X                     | X  | X   | X  | X   | XX               | X   | X   | XXXX                    | X                  |

### CONFIGURATION QUESTIONS FOR PATCHCORD

#### 1. Are connectors on one end or both ends?

- P Pigtail is One End  
 J Jumper is Two End

#### 2. What is the Fiber Type?

- B ESM BendBright  
 C 62.5mm Standard  
 D 50mm Standard  
 E 50 10GBE  
 F BendBright-XS with Blue Jacket (Standard)  
 G BendBright-XS with Yellow Jacket  
 H 62.5mm Capacity

#### 3. What is the Cable Type?

- A Simplex  
 B Duplex Zip  
 C Duplex Round 3mm

#### 4. What is the Flame Rating?

- R Riser  
 P Plenum  
 Z Low Smoke Zero Halogen

#### 5. What is the Cable OD; or Unit OD in DX Zip?

- A 0.9mm (Simplex only)  
 B 1.6mm  
 C 2.0mm  
 E 2.9mm

#### 6. What is the Fiber Count?

- 01 Simplex  
 02 Duplex

#### 7. What is the First Connector Type?

- A SCU  
 B SCA  
 C FCU  
 D FCA  
 E LCU  
 F STU  
 I LCA  
 J MU  
 K MTRJ (2mm Duplex Zip Only)

#### 8. What is the Second Connector Type?

- A SCU  
 B SCA  
 C FCU  
 D FCA  
 E LCU  
 F STU  
 I LCA  
 J MU  
 K MTRJ (2mm Duplex Zip Only)

#### 9. What is the Length?

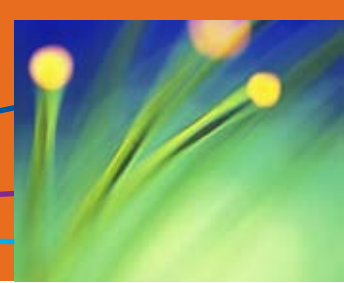
- 0000-  
 9999 Length for Cable

#### 10. What is the Unit of Measure?

- M Meter  
 F Feet

# ezPATCH™ | Connectorized Cable (Cords)

## Optical Fiber Jumpers & Pigtails



### Polish Specifications

| Polish Type                          | Insertion loss                | Back Reflection              | Connector Type |
|--------------------------------------|-------------------------------|------------------------------|----------------|
| Ultra Polish Physical Contact (UPC)  | $\leq 0.25$ dB per mated pair | $\leq -55$ dB per mated pair | SC, LC, FC, ST |
| Angled Polish Physical Contact (APC) | $\leq 0.3$ dB per mated pair  | $\leq -65$ dB per mated pair | SC, LC, FC     |

### Questions To Answer Before You Order.

1. Are Connectors on one End or Both Ends? \_\_\_\_\_
2. What is the Fiber Type? \_\_\_\_\_
3. What is the Cable Type? \_\_\_\_\_
4. What is the Flame Rating? \_\_\_\_\_
5. What is the Cable OD; or Unit OD in DX Zip? \_\_\_\_\_
6. What is the Fiber Count? \_\_\_\_\_
7. What is the First Connector Type? \_\_\_\_\_
8. What is the Second Connector Type? \_\_\_\_\_
9. What is the Length? \_\_\_\_\_
10. What is the Unit of Measure? \_\_\_\_\_